



Braided Flexible Hose

with **PE-X Flexible Pipe Inner**

Transparent and NO SMELL
replacing EPDM/PVC pipes



PE-X transparent flexible pipe

Material: PE-Xb

Temperature: -70°C to 110 °C

Pressure: **3.0MPA** / 26°C, **1.0MPA** /90°C

Media: water, acid and alkali, excellent resistance to the reducing agent, oxidant, toluene, xylene and gasoline.

Service life: more than 20 year for water.

Certificates: DVGW (KTW-A), ISO9001-2000, DIN standard

Advantages:

1. flexible like the rubber
2. Sanitary and environment friendly
3. No stink, without lead or mercury
4. Excellent quality at lower price

Property Index of PE-X pipe

Test Items	Test results
Appearance	natural, transparent, smooth, no air bubble
Sustained Pressure (26°C)	3.0MPA
Gel Content	70%
Shore A	65-75



Flexible PEX-b Pipe

■ A new pipe replacing EPDM pipe

1. Brief introduction

Flexible PEX-b Pipe is made of excellent and high purity LDPE raw materials; it can be used at the temperature from -70°C to 110°C for water, acid and alkali, with an excellent resistance to the reducing agent, oxidant, toluene, xylene and gasoline.

Flexible PEX-b Pipe can transport the high temperature and pressure of the fluid after the steel-wire reinforced. It has excellent anti-aging properties with more than 20 years service time.

The most advantage of flexible PEX-b pipe is its flexibility just like the rubber. It is sanitary and environment friendly and its sanitation meet the standard of B/T 17219-1998, no stink, without lead or mercury, especially for supplying of hot or cold drinking water, being an inner line of gondola water faucets or industrial equipments.

PHYSICAL PROPERTIES

Items	Test results
Appearance	Half-transparent/natural, smooth, no air bubble, no flaw or impurity
Sustained Pressure (26°C)	26°C 3.0MPA; 95°C 1.0MPA
Gel Content	68%
Shore A	60-95



Main Sizes of Flexible PEX-b Pipe

Size	Outer Diameter (mm)	Wall Thickness (mm)	Weight (g/m)
8*5	8	1.5	27.6
8*6	8	1	20
9*6	9	1.5	31.8
9*7	9	1	25.2
10*6	10	2	46
10*7	10	1.5	36.1
10.5*7.5	10.5	1.5	38.2
11*8	11	1.5	40.3
11*7	11	2	50.9
12*8	12	2	63

2. Advantages

a. Sanitary and environment friendly

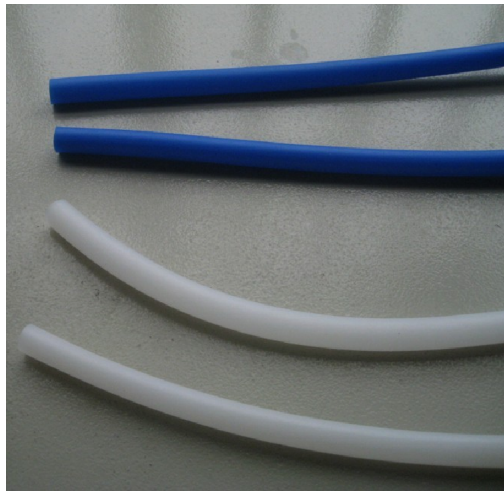
PEX-b Flexible Pipe is made of imported LDPE raw material, meeting FDA requirements and B/T 17219-1998 standard. Its material has no other filler as well as toxic additives, so PEX-b Flexible Pipe can be used for drinking water.

b. Excellent quality with lower prices

PEX-b Flexible Pipe can work at the temperature of 110°C for a long time, without any break when expands twice diameter, and it will restore to their original when the pressure eliminates.

The price of PEX-b Flexible Pipe is more competitive than the EPDM rubber, butyl rubber and silicon rubber, with better performance of EPDM material, much better than PVC material because of density.

3. Pictures



Flexible Braided Hose



Stainless steel braided hoses

Technical Specifications						
	DN6	DN8	DN10/DN11	DN13	DN19	DN25
Inner dia. (mm)	6	8	11	13	19	25
Outer dia. (mm)	10	12	15	19	27	33
Fitting inner dia. (mm)	4.5	6	8.5	9.5	15	20
Flow rate at 3 bar (lit/min)	19	29	50	65	120	200
Minimum bending radius (mm)	25	30	35	45	70	100
Working pressure (bar)	10	10	10	10	16	10
Working temp. (°C)	90	90	90	90	90	90
Recommended application	Faucet connector	Sanitary plumbing	Heaters boilers	Heaters, boilers, air-conditioning	heaters, boilers, air-conditioning	heaters, boilers, air-conditioning

1. Components:

PE-X flexible inner pipe

AISI 304 Wires Braided;

AISI 304 Seamless Ferrel (Brass, SS Seam Ferrel Optional);

Female Brass Nut and Brass Insert Nickel plated;

Brass Insert Original Color (Nickel Plated Optional);

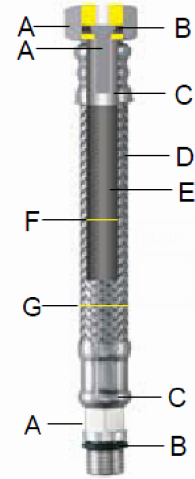
NBR/EPDM O-ring and Gasket;

2. Working environment:

Temperature: -40-- 90 Degree;

Pressure: Max 16 Bar;


Guarantee: 10 years;



- A. Nickel-plated brass
- B. Incorporated EPDM O-ring
- C. Stainless steel AISI304
- D. Stainless steel wires AISI 304
- E. PE-X
- F. Internal diameter ø 6mm
- G. External diameter ø 10mm

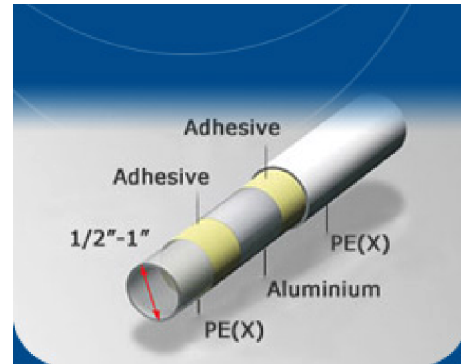
SHOWER HOSE

Double-lock shower hoses in stainless steel, with available lengths 1500mm, 1750mm & 2000mm.
 Extensible double-lock shower hoses with length is 1750mm extensible to 2300mm.

	Double-lock shower hoses in stainless steel	Applications	
Inner dia. (mm)	7.4	Suitable for the connection of every kind of shower heads	
Outer dia. (mm)	14		
Fitting inner dia. (mm)	6.2		
Flow rate at 3 bar (lit/min)	45		
Minimum bending radius (mm)	37		
Working pressure (bar)	5		
Working temp. (°C)	70		

PEX-AL-PEX PIPE TECHNICAL STRUCTURE

PEX-ALPEX Composite Pipe (PEX Tubing) consists of five layers, inside and outside layers are made of Cross-Linked Polyethylene (PEX) tightly bonded with melt adhesive to the mid-layer of aluminum core which is longitudinally welded



PEX-AL-PEX PIPE SPECIFICATION

PEX-AL- PEX PIPE			
DIMENSION	O/D (mm)	I/D (mm)	WALL THICKNESS (mm)
1216 1/2"	16	12	2
1620 3/8"	20	16	2
2025 3/4"	25	20	2.5
2632 1"	32	26	3.0

PEX-AL-PEX PIPE TECHNICAL PPARAMETER

MAIN SPECIFICATIONS OF OVERLAPPED PIPES				
ITEM	1216	1620	2025	2632
INNER DIAMETER (mm)	12.00	16.00	20.00	26.00
MINIMUM OUTSIDE DIAMETER (mm)	16.00	20.00	25.00	32.00
TOLERANCE ON MINIMUM (mm)	+0.3	+0.3	+0.3	+0.3
MIN WALL THICKNESS (mm)	2.00	2.00	2.20	2.90
WALL TOLERANCE (mm)	+0.5	+0.5	+0.5	+0.5
AI THICKNESS (mm)	0.20	0.21	0.25	0.28
ADHERENCE AND CRACKING BY EXPANSION (N)	2300 min	2500 min	2500 min	2650 min
PEEL OFF STRENGTH (N)	25	28	30	35
INTERNAL PRESSURE (95°C, 2.72Mpa, 10h)	No break, No seep	No break, No seep	No break, No seep	No break, No seep

GEL CONTENT	70%	70%	70%	70%
REEL LENGTH	200/100	200/100	100/50	50

MAIN SPECIFICATIONS OF SEAMLESS BUTT LASER WELD PIPES				
ITEM	1216	1620	2025	2632
INNER DIAMETER (mm)	12.00	16.00	20.00	26.00
MINIMUM OUTSIDE DIAMETER (mm)	16.00	20.00	25.00	32.00
TOLERANCE ON MINIMUM (mm)	+0.3	+0.3	+0.3	+0.3
MIN WALL THICKNESS (mm)	2.00	2.00	2.20	2.90
WALL TOLERANCE (mm)	+0.5	+0.5	+0.5	+0.5
AI THICKNESS (mm)	0.21	0.23	0.28	0.30
ADHERENCE AND CRACKING BY EXPANSION (N)	2300 min	2500 min	2500 min	2650 min
PEEL OFF STRENGTH (N)	25	28	30	35
INTERNAL PRESSURE (95°C, 2.72Mpa, 10h)	No break, No seep	No break, No seep	No break, No seep	No break, No seep
GEL CONTENT	70%	70%	70%	70%
REEL LENGTH	200/100	200/100	100/50	50

ADVANTAGE of PE(X)-ALPE(X) PIPE AS FOLLOWS

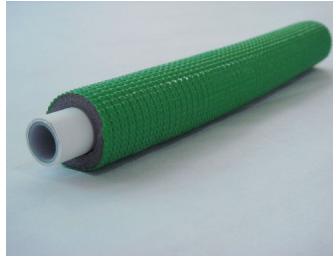
- ◎ **Healthful, not poisonous** Clean, sanitary, safe;
- ◎ **Resistance to high temperature** (110°C) and pressure;
- ◎ **Anti-corrosion, Smooth inner surface keeps** low flow noise;
- ◎ **Anti-freeze** (-70°C) , anti-knock;
- ◎ **Flexible and no rebounding;**
- ◎ **Light weight, easily transport and storage;**
- ◎ **Service life is over 50 years.**



APPLICATIONS of PE(X)-Al-PE(X) PIPE

Underfloor heating is a hygiene and high-class heating system, which has been widely used in developed countries, and will be adopted gradually in other countries. Besides underfloor heating system, **PE(X)-Al-PE(X)** composite pipes can be used in areas as below:

1. Heating system of caliduct and wall, the equipment for snow melting in cold regions;
2. Heat and cold pipes for life, solar energy water heater, irrigation engineer in agriculture;
3. Pipes for coal gas and natural gas, air-condition and blower;
4. Pipes for electric wire and cable;
5. Pipes for oil and industrial liquids transportation.





PE-Xb YD-PEX-01

Description

YD-PEX-01 is a crosslinkable compound made by silane grafted HDPE polymer according to SIOPLAS process, with a catalyst masterbatch to accelerate the crosslinking reaction. It's widely used to make crosslinkable pipes for hot and cold water supply and floor heating system. Applications in **PEX pipes and PEX-AL-PEX pipes** solutions are all suitable.

Physical Properties:

ITEM	TEST METHOD	UNIT	STANDARD	TYPICAL VALUE
Density	ASTM D792	g/cm ³	0.94±0.003	0.940
Bulk Density	ASTM D1895-1996	g/cm ³	0.59±0.050	0.590
Melt Flow Index (190°C/5Kg)	ASTMD 1238	g/10min	1.2-2.2	1.78
Volatile Total	GB12006.2-89	%	≤0.40	0.20
Tensile Strength At Break	ASTM D638	Mpa	≥21	23.8
Elongation At Break	ASTM D638	%	≥400	420
Gel Content	ASTM D2765	%	≥65	72

Proportions:

Place according to 95% A (Silane grafted ethylene polymer) with 5% B (catalyst masterbatch).



Screw parameters:

YD-PEX-01 can be processed on most modern thermoplastic extruders. Particularly if the available screw is designed for Polyethylene, excellent products can be expected.

Screw Parameters: Length-to-diameter(L/D) ratio >25

Compression ratio: 3-2.5:1

Temperature Profile:

Zone 1	Zone 2	Zone 3	Zone 4	Head	Die	Screw
160-170°C	170-180°C	180-190°C	190-200°C	200-210°C	190-220°C	70-90°C

Suggestion for the best extrusive situation:

1. Pre-dry the catalyst masterbatch and color masterbatch at a temperature of 80-90°C for 2 hours.
2. Reasonable design the head and die to obtain a streamline production.
3. When the machine is restarted after blocking 10-15min, it must be purged by HDPE (MFI: 0.3g/min).
4. It is better to use the material without broken bags.

Crosslinking & Curing:

The final pipe properties are crosslinking curing dependent. Curing method is immersion in hot water at 90°C~95°C or exposure to low pressure steam. The period required to obtain the final gel content depends on the wall thickness and curing temperature.

Storage & Handling:

The storage life is six months if YD-PEX-01 can be stored in a suitable condition.

1. To avoid pre-mature crosslinking, the silane crosslinkable compound and catalyst masterbatch shall be stored separately and mixed only when used. Mixed graft and catalyst must be used in 2 hours.
2. Keep the bags closed and unbroken. Once opening, the product must be used up within 4-5 hours.
3. Exposure to direct sunlight must be avoided.

Packing:

Al-plastics and intertexture bags containing 25kg, sealed under vacuum.

Product Picture:

